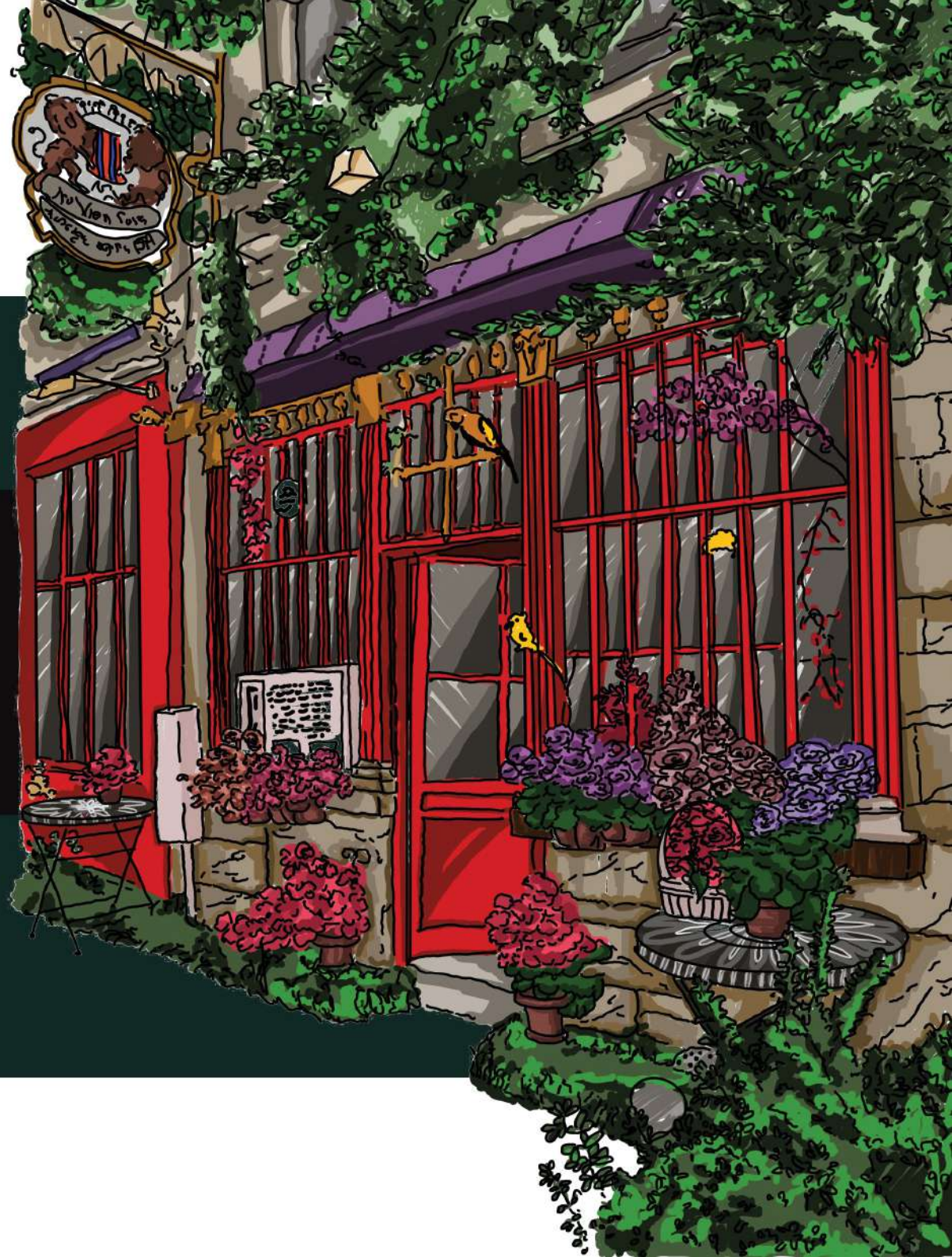


Portfolio

INTERIOR DESIGN



Resume

Aishwarya Shivalkar

HAILING FROM THE "CITY THAT NEVER SLEEPS" AND HAVING A WIDE CULTURE EXHIBIT A PERSON WHO IS ALWAYS KEEN ON EXPLORING MULTIPLE PERSPECTIVES WHICH BRINGS ABOUT A WHOLE NEW DOMAIN TO PLAY WITH. DRAWING ON UNEXPLORED POSSIBILITIES. EACH SPACE, BE IT INDOOR OR OUTDOOR, BRINGS ABOUT A CERTAIN EMOTION FROM WITHIN. DESIGN IS WHAT DECIDES & TAILORS EXPERIENCE IT GENERATES BY SEWING TOGETHER THE EMOTION AND FEELING IN A VERY SPECIFIC WAY WITH EXECUTION OF DESIGN ELEMENTS.

EDUCATION

UNITED WORLD INSTITUTE OF DESIGN
2016 - 2020 | BACHELORS IN INTERIOR & FURNITURE DESIGN

THAKUR COLLEGE OF SCIENCE & COMMERCE
2014 - 2016 | COMMERCE F.Y.J.C

THAKUR VIDYA MANDIR HIGH SCHOOL & JUNIOR COLLEGE
2008 - 2014 | SCHOOLING

EXPERIENCE

2020 | FAQUIH & ASSOCIATE
JUNIOR INTERIOR DESIGNER/
GRADUATION PROJECT.

2019 | FAQUIH & ASSOCIATE
INTERNSHIP

WORK SHOPS

1. BAMBOO WORKSHOP AUROVILLE.
2. YUVA RATNA BIRLA WHITE ART INSTALLATION WORKSHOP
3. UID CRAFTS WORKSHOP
4. INSTALLATION FOR VIJJE (BOOK CLUB)
5. ROBOTICS WORKSHOP.

SOFTWARE SKILLS

ILLUSTRATOR
3DS MAX
AUTO CAD
PHOTOSHOP
SKETCHUP
PROCREATE
LUMION

CONTACT

CONT :- 9867989767
EMAIL ID :- AISHWARYA193019@GMAIL.COM

1.

FAQUIH & ASSOCIATES
OFFICE COMMERCIAL
PROJECT.

2.

KEDIA HOUSE - CLUB
HOUSE RESIDENTIAL
PROJECT.

3

RAYMONDS STORE -
RETAIL DESIGN PROJECT.

4

JK HOUSE- CONFERENCE
ROOM COMMERCIAL
DESIGN STUDIO

5

RUIA HOUSE- FACADE DESIGN
AND LAWN DESIGN- RESIDENTIAL
PROJECT

6

HOSPITALITY DESIGN
STUDIO

7

CONTAINER KIOSK-
BAR CAFE DESIGN
STUDIO

8

RETAIL DESIGN
STUDIO- HAMLEYS
TOY STORE.

Faquih & Associates

COMMERCIAL DESIGN PROJECT

THE Concept

F&A office

As the existing work station is in the corner of the office, so it makes the work station space very congested to sit. Also with a small material library in the existing office all the material samples lie on the work station desks making the space crowded. The proposed area for work station includes the work station shifted to the central area of the whole office which gives the work station area a more equal systematic places for everyone with proposed desks where wires are not exposed with sleek pc's smaller cpu's for more clear space on the desk's.



THEME

Expansion of the mood library and material library, and being organised while using and storing material was the main motive of the proposed material library. the mood library is the main objective of the whole renovation. As Selecting material, making mood boards, presenting them is a huge part of architecture and interior design, client wanted a completely different area for that which includes a discussion table, lots of materials and architectural books, mood board preparation table, and a different table with big tv sets so the employees can refer the 3D views on it and create the mood boards. Spaces for storing the mood boards and project files, spaces for keeping small samples to big samples and brochures Discussion tables for clients to discuss the boards and views. In a nutshell creating a space which circulates all the material related work within one room. And reducing the amount of material stacks from desks and random places.



THE

MATERIAL LIBRARY

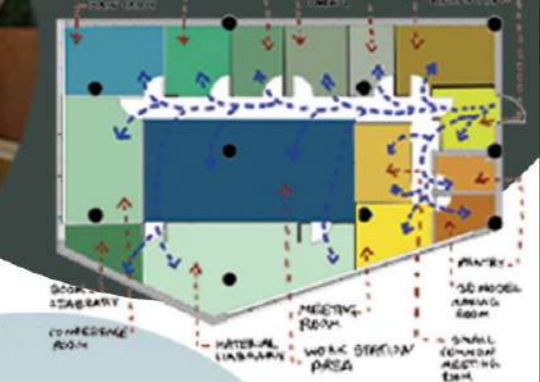
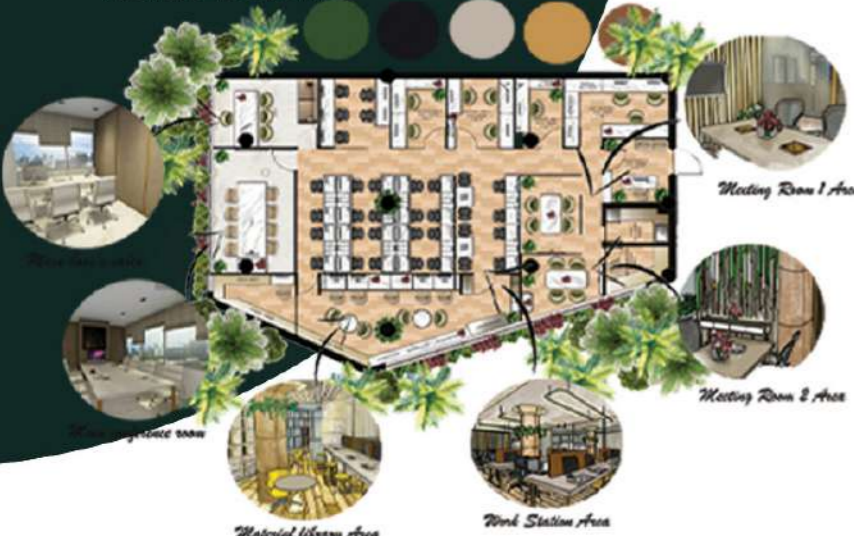
Work Station

Commercial Design

OFFICE PLAN



AREA ZONING



Office Elevations



STYLE BOARD



MATERIAL BOARD



ELEVATION A



ELEVATION B

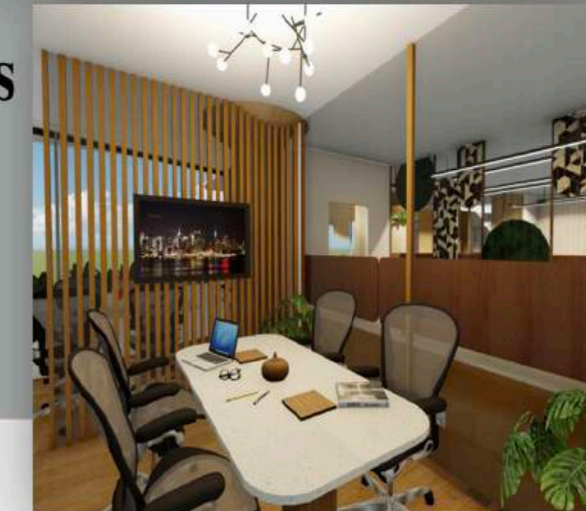
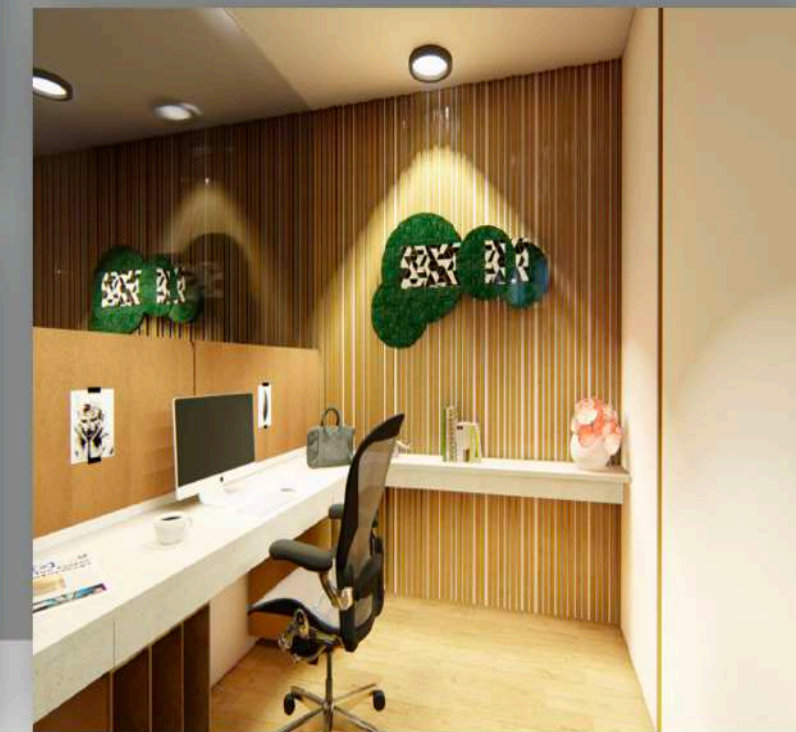


ELEVATION C



MEETING ROOM 1

3d Views



Faquih & Associates

The space includes a work station area, material library, reception, pantry, accounts cabin, 2 non formal meeting rooms, book library, 4 associates cabins, 3d model making room, 3d vies making room.

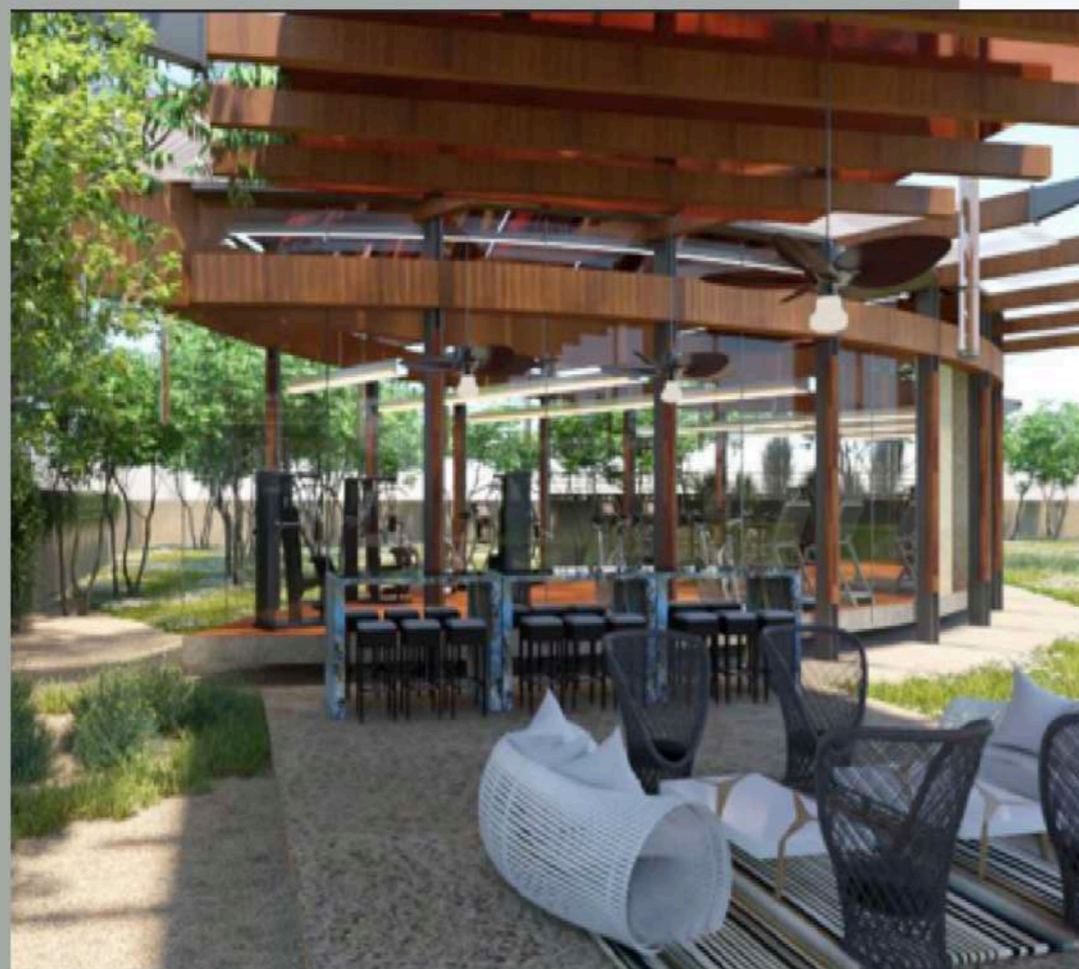
Kedia house

RESIDENTIAL DESIGN
PROJECT

THE Concept

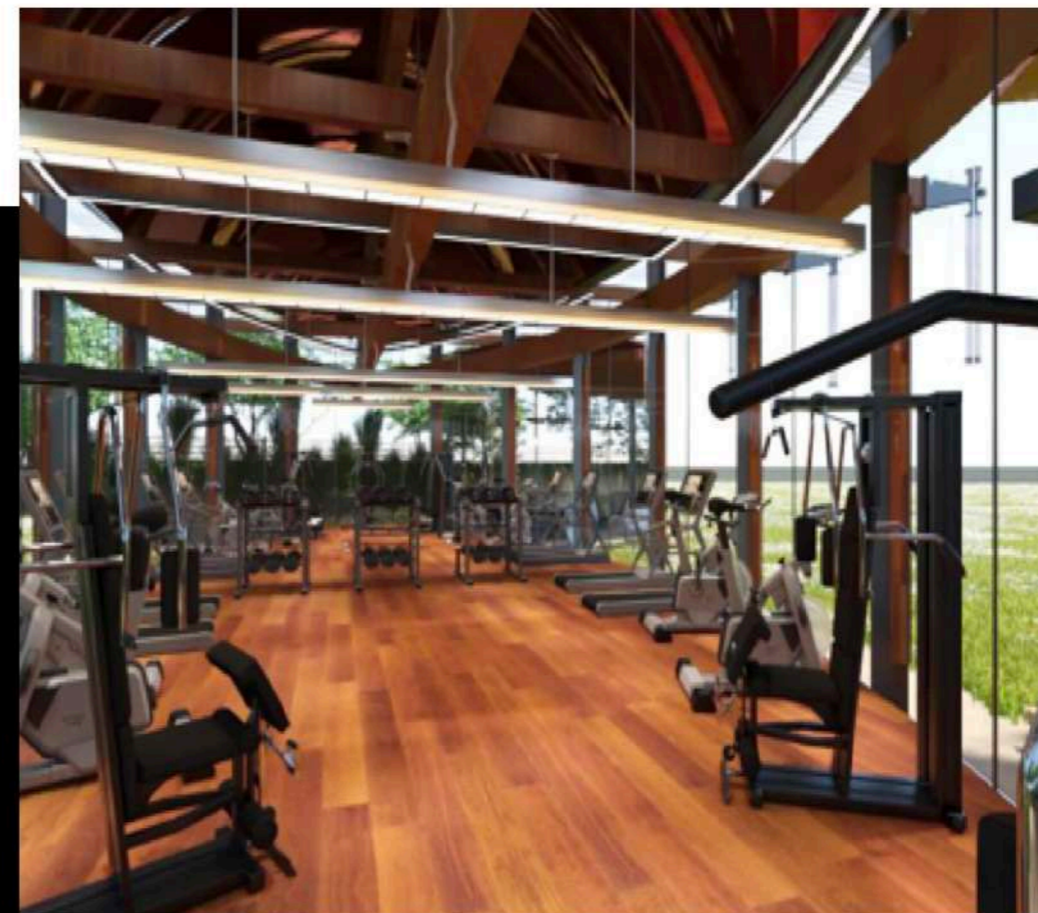
Kedia House

The idea was to create a recreation space for the Kedia villa a residential project, which is inspired by the shape of a boat kept upside down as the roof and a sleek metal and glass structure for the walls, giving it a open to nature recreation space look.



THEME

The form inspired by the shape of a boat kept upside down, along with elegant materials to enhance the complete look, metal bars rotating around the complete shape also acting as standing contemporary lights going till the ground with mesh type metal bendable sheets on the roof, the gym and spa areas walls of glass and metal for more transparency and a recreation space which feels more close to the nature.



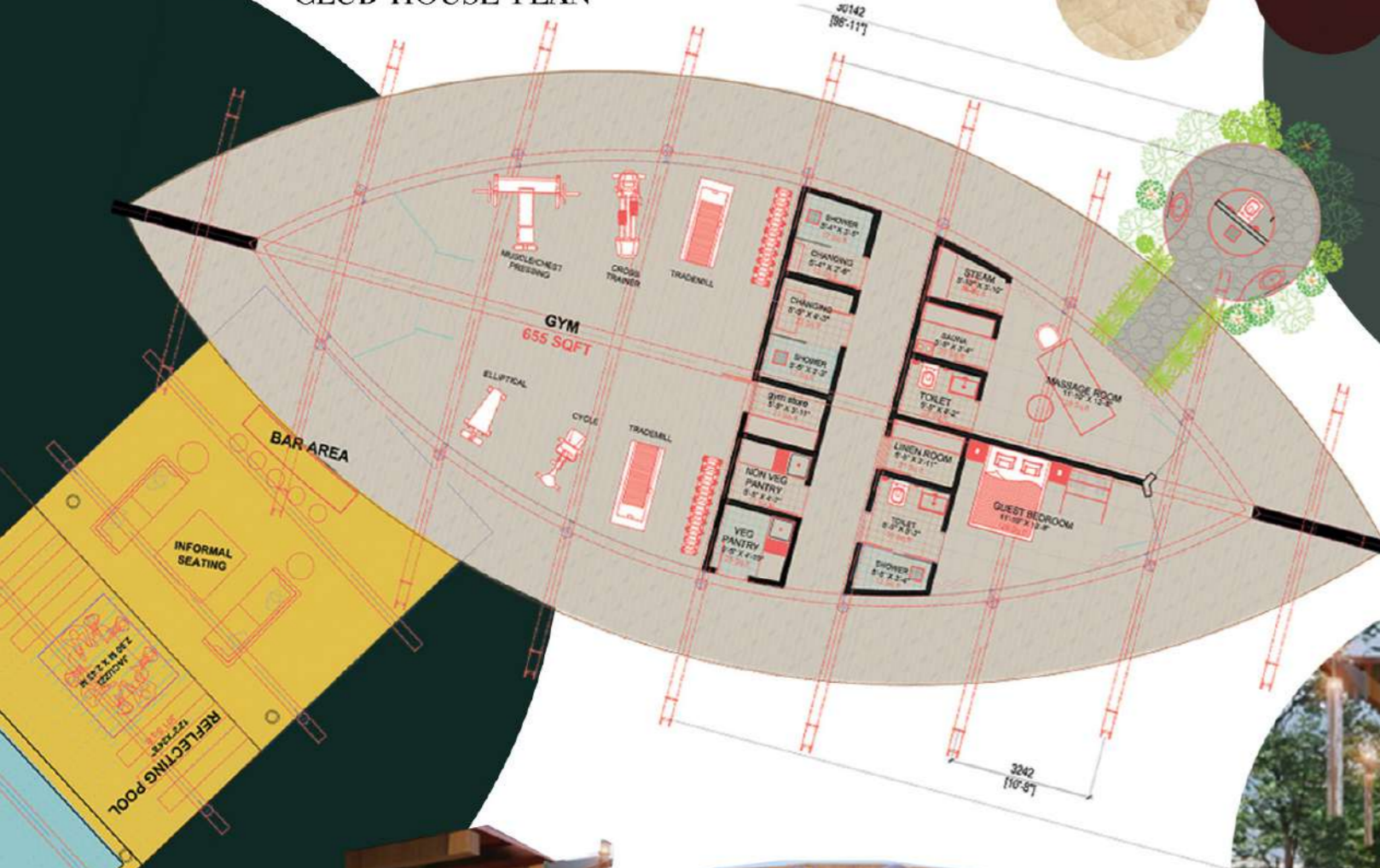
THE

WORKOUT ZONE

Workout area

Club House Design

CLUB HOUSE PLAN



MATERIAL PALLETTE

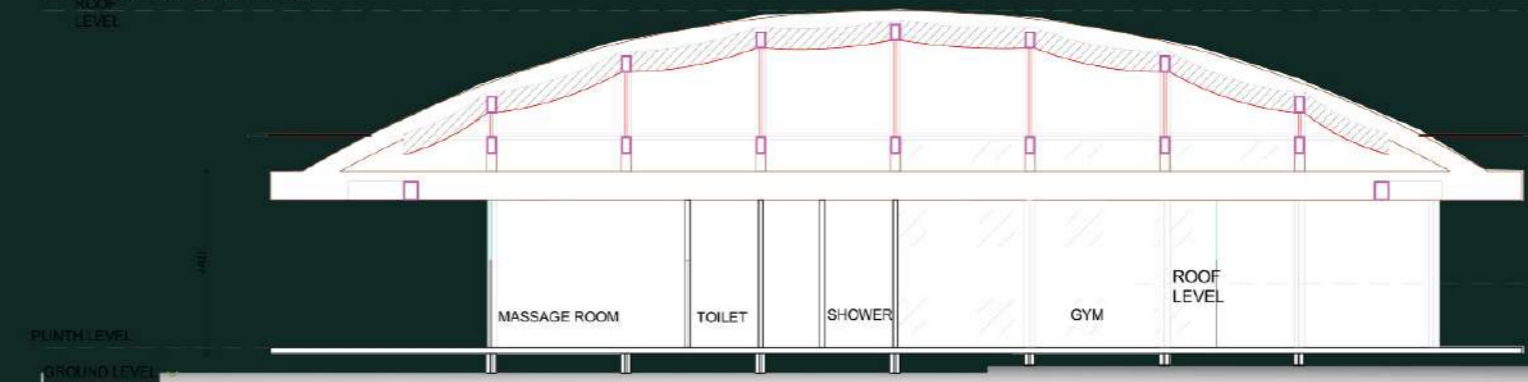


Club House Elevation

ELEVATIONS



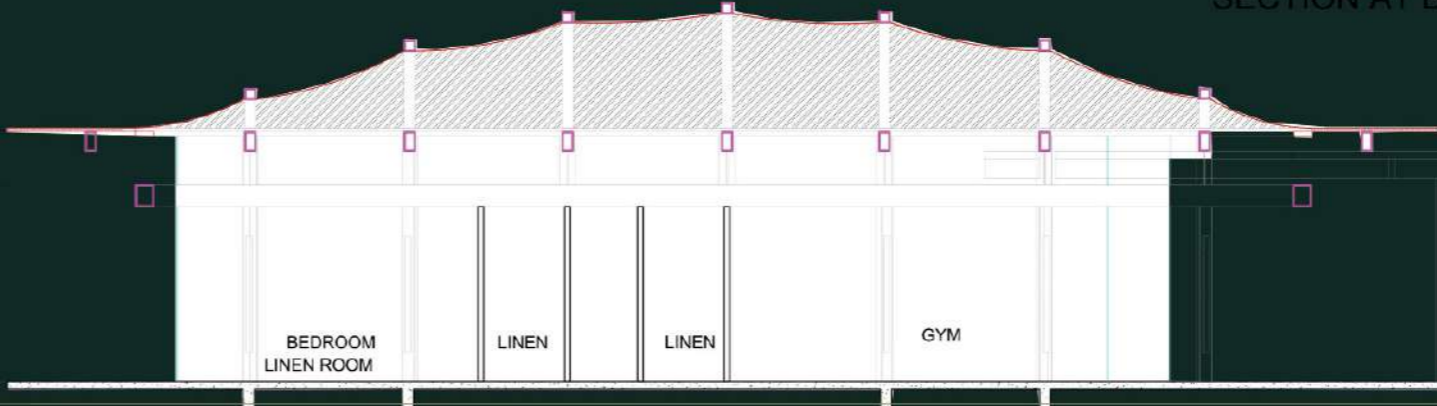
MATERIAL PALLETTE



SECTION AT AA'



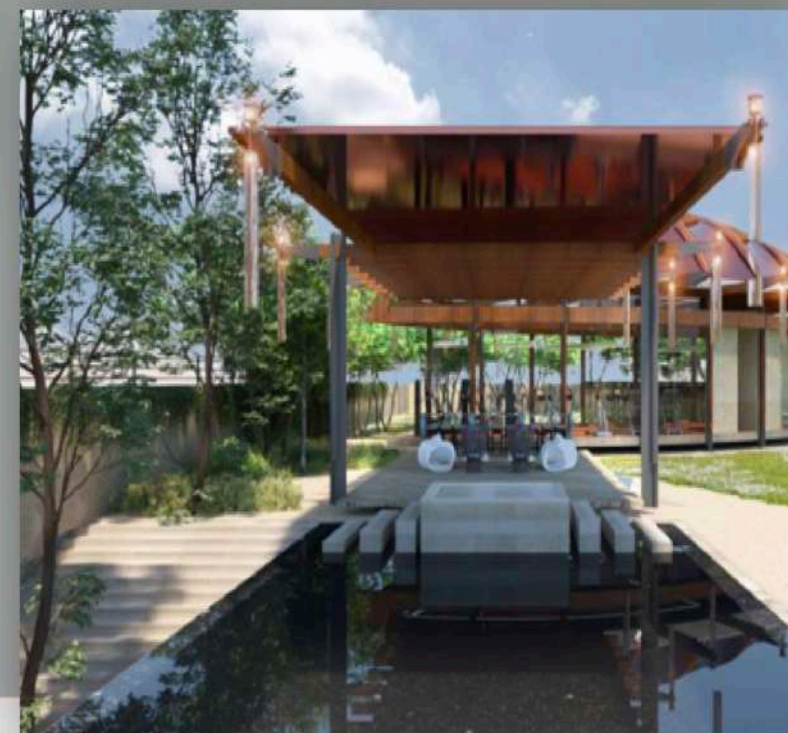
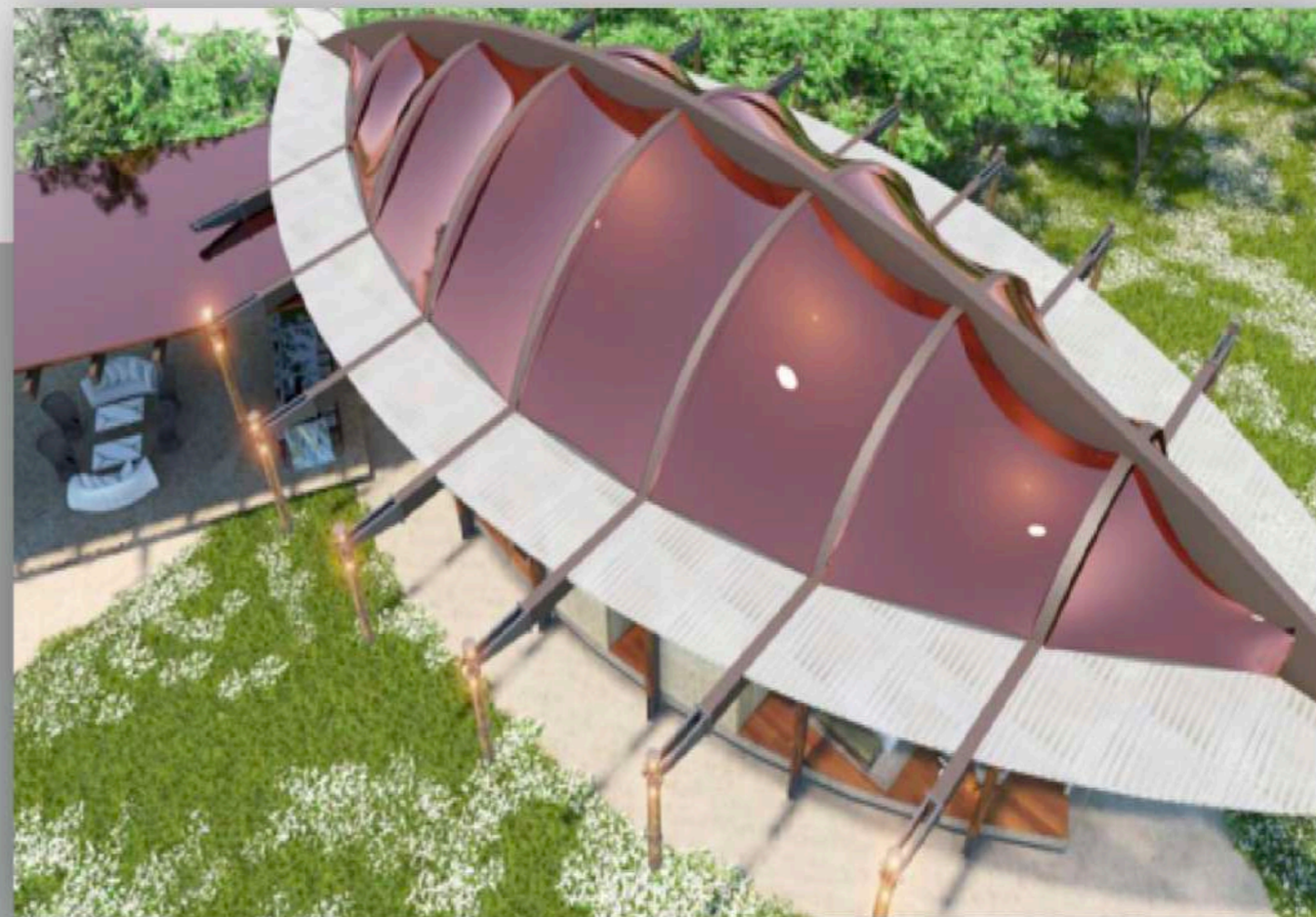
SECTION AT BB'



SECTION AT CC'



3d Views



CLUB HOUSE

The space includes a swimming pool with a seating area, gym a veg and non veg pantry with spa and Sona room with a guest room and a luxury open to sky bath room.

Raymond's Apparel

RETAIL DESIGN PROJECT

THE Concept

Kedia House

The idea was to create a space, which allows the consumers to have a luxurious experience of shopping and enjoying the ambience and food from the cafe.



THEME

The idea was to create a simple sleek design with a simple material palette using grey Kota stone, glass and metal. Also creating an ambience for the customers so they can enjoy the experience of eating and drinking coffee with friends while shopping.

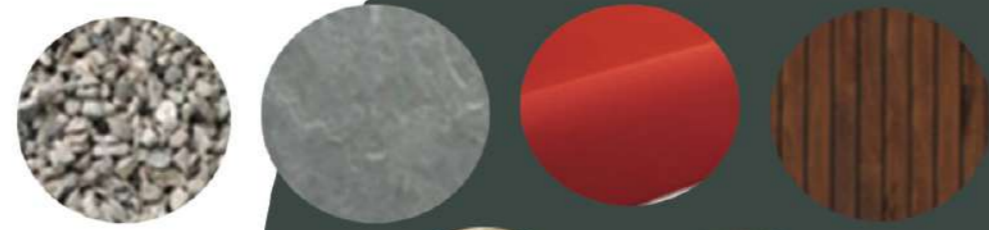
The main structure is made of glass and metal for more transparency. There's also an open roof cafe with an open bar.



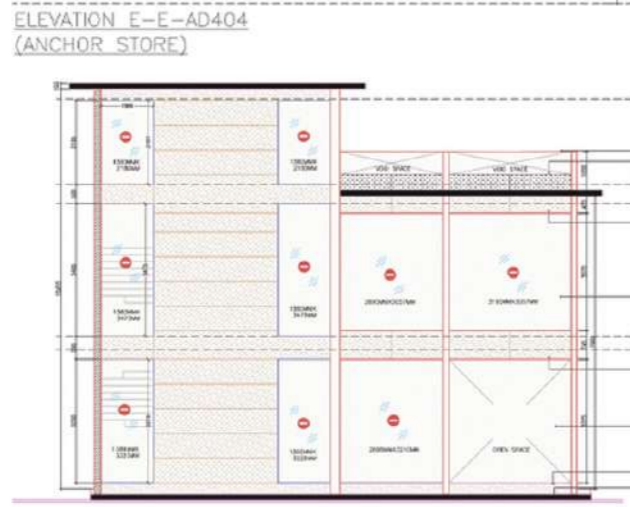
THE RAYMONDS

Retail Store

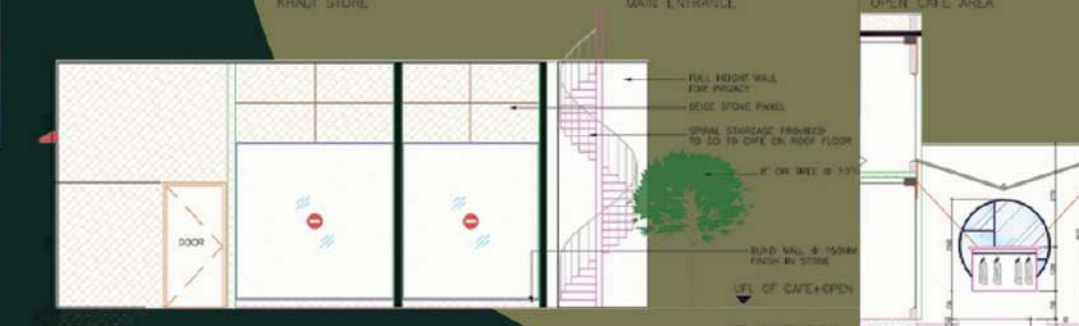
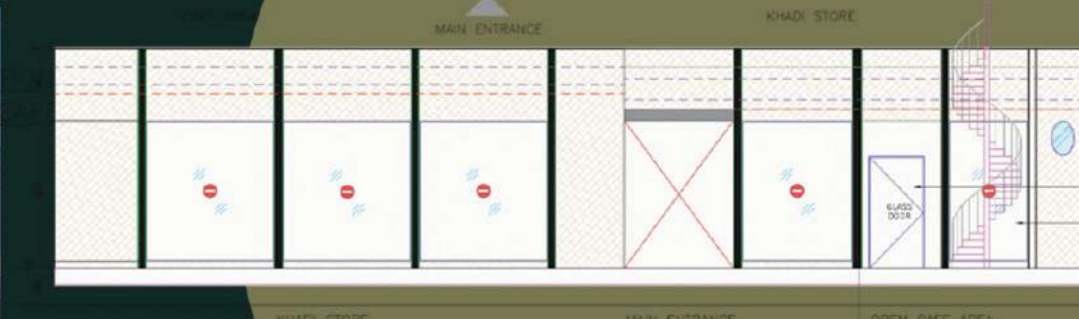
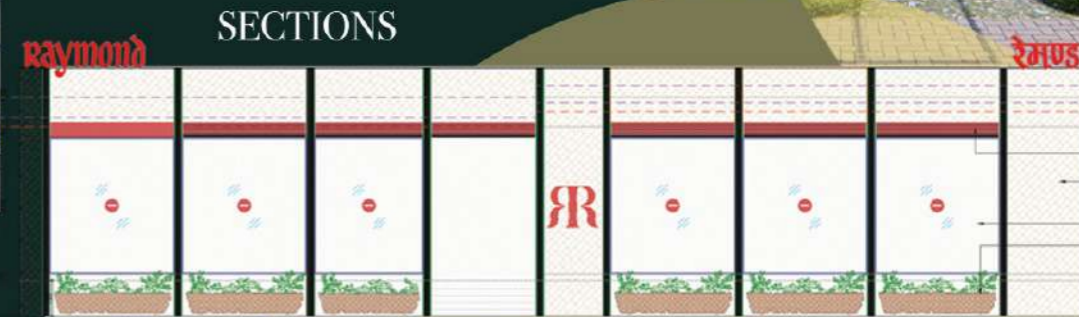
Detail Design



MATERIAL PALLETE



Detail Store Elevations



3d Views



Raymonds Store

The space includes open cafe and a open bar with roof top cafe, a khaki store and a formal men's wear store with servant quarters in the back for the staff and a small pantry and fire exit.



Lk House

COMMERCIAL DESIGN
PROJECT

THE Concept

Jk House

The idea was to create a conference room, which is elegant, simple and which showcases a play of variety of different plain materials combined together. In a nutshell gives a classy and simple look to the interiors.



THEME

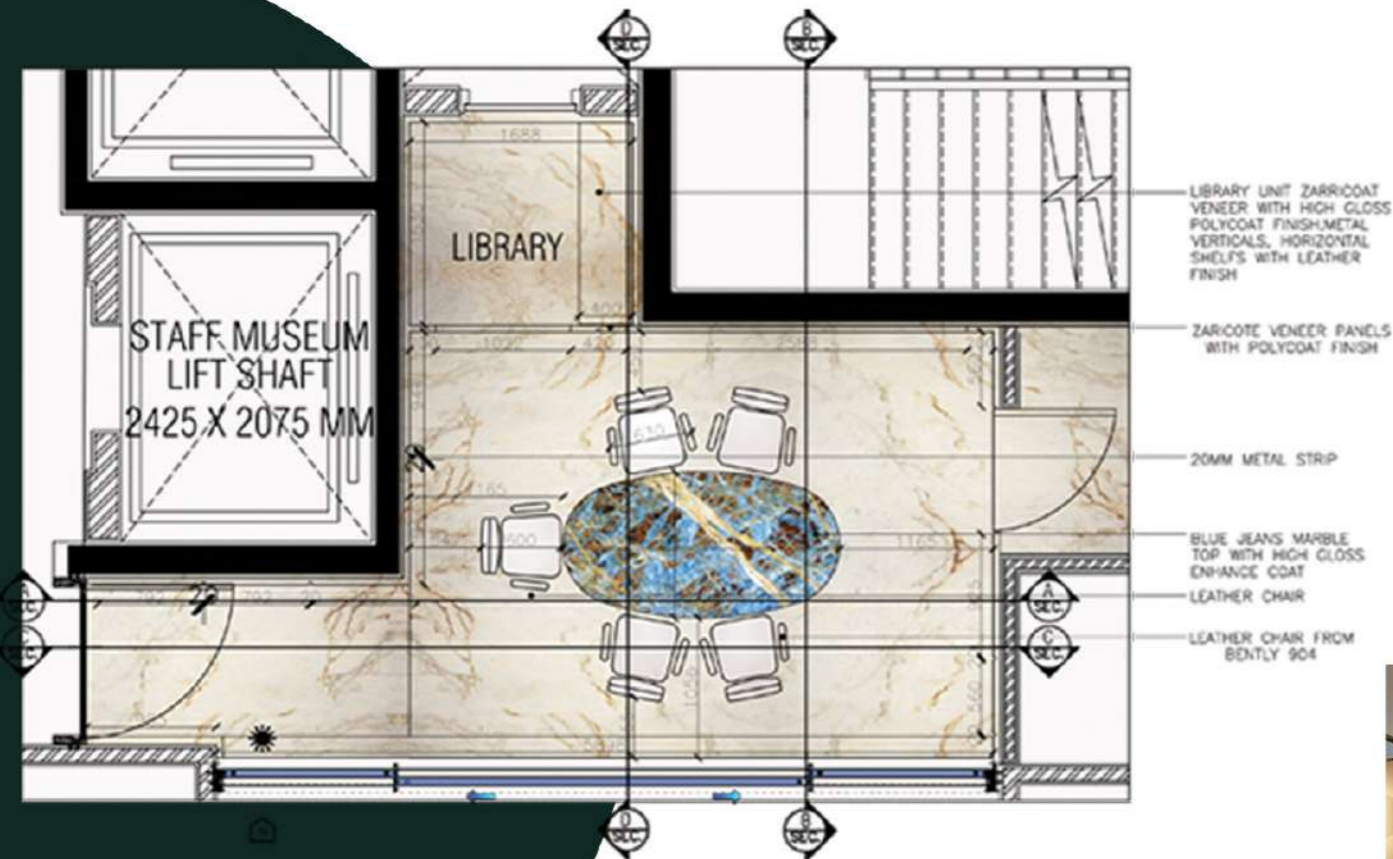
Simplicity is the key factor considered while designing. The conference room was designed in such a way that it fulfils the elegance and simple material palette selected. which includes elegant Michelangelo marble, with zari coat laminate, suede wall paper for ceiling and blue jeans marble for table top. The library designed with simple material palette of white glossy laminate and bronze metal, for elegance.

Library



THE LIBRARY

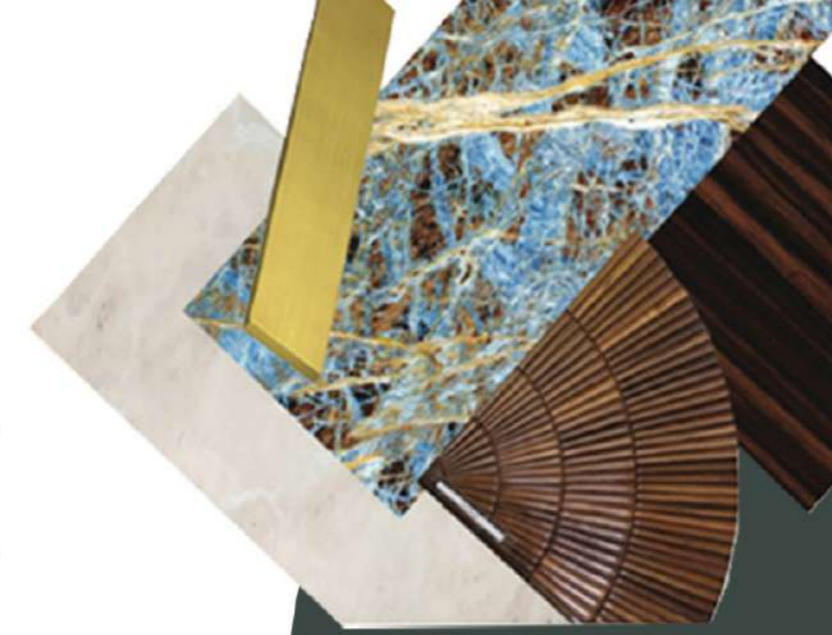
Commercial Design



CONFERENCE ROOM PLAN

FURNITURE LAYOUT

- LIBRARY UNIT ZARRICOAT VENEER WITH HIGH GLOSS POLYCOAT FINISH-METAL VERTICALS, HORIZONTAL SHELVES WITH LEATHER FINISH
- ZARICOTE VENEER PANELS WITH POLYCOAT FINISH
- 20MM METAL STRIP
- BLUE JEANS MARBLE TOP WITH HIGH GLOSS ENHANCE COAT
- LEATHER CHAIR
- LEATHER CHAIR FROM BENTLY 904

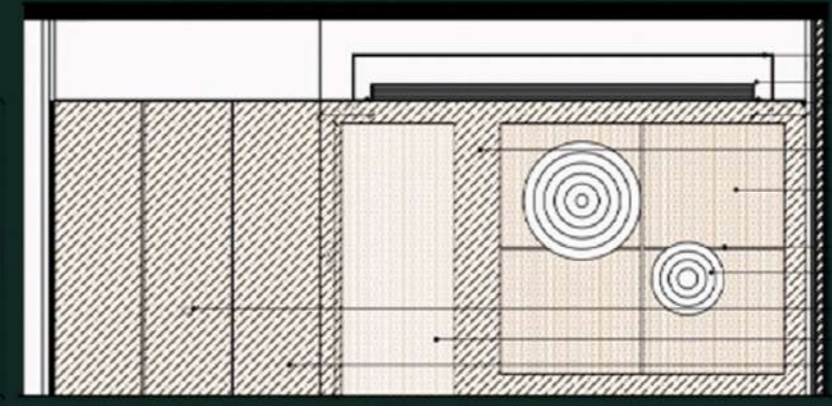


MATERIAL PALLETE

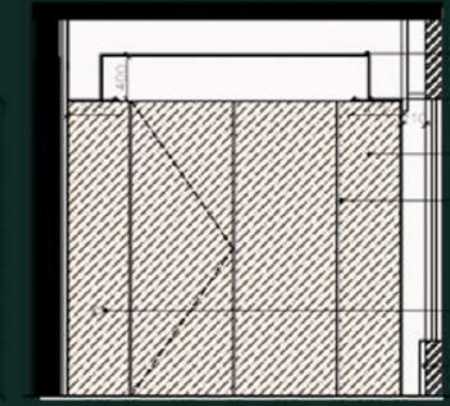


Conference Room Elevations

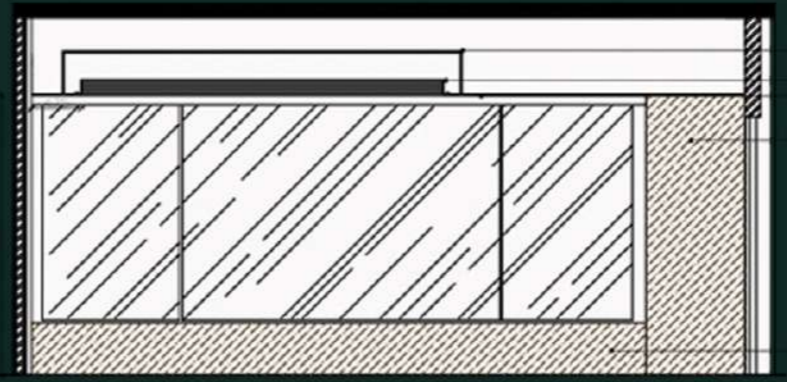
SECTIONS



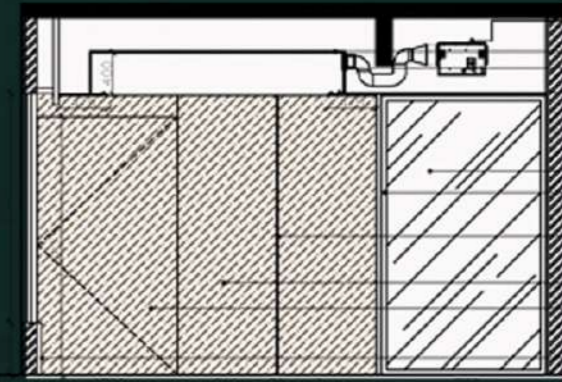
Section AA



Section BB

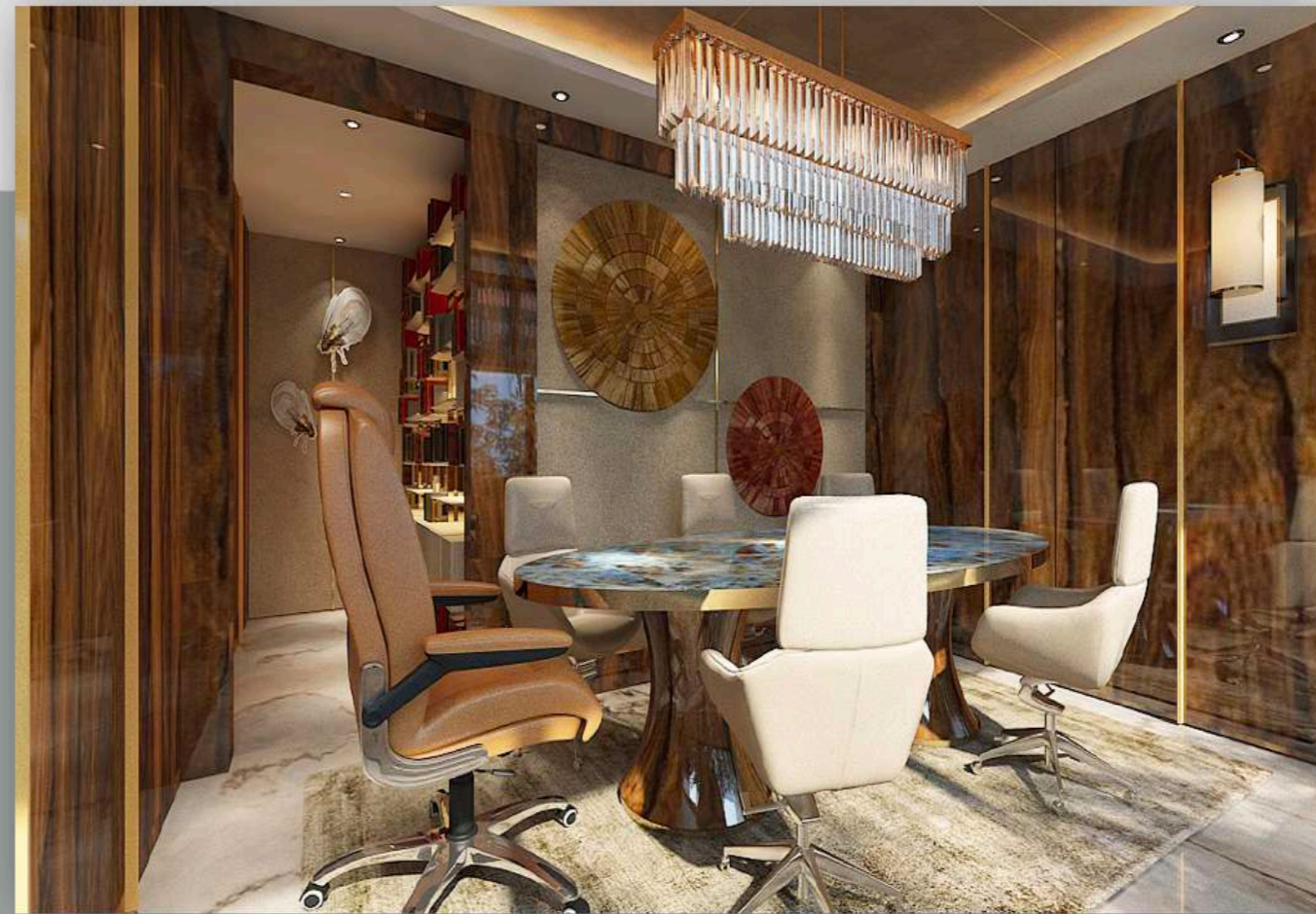


Section CC



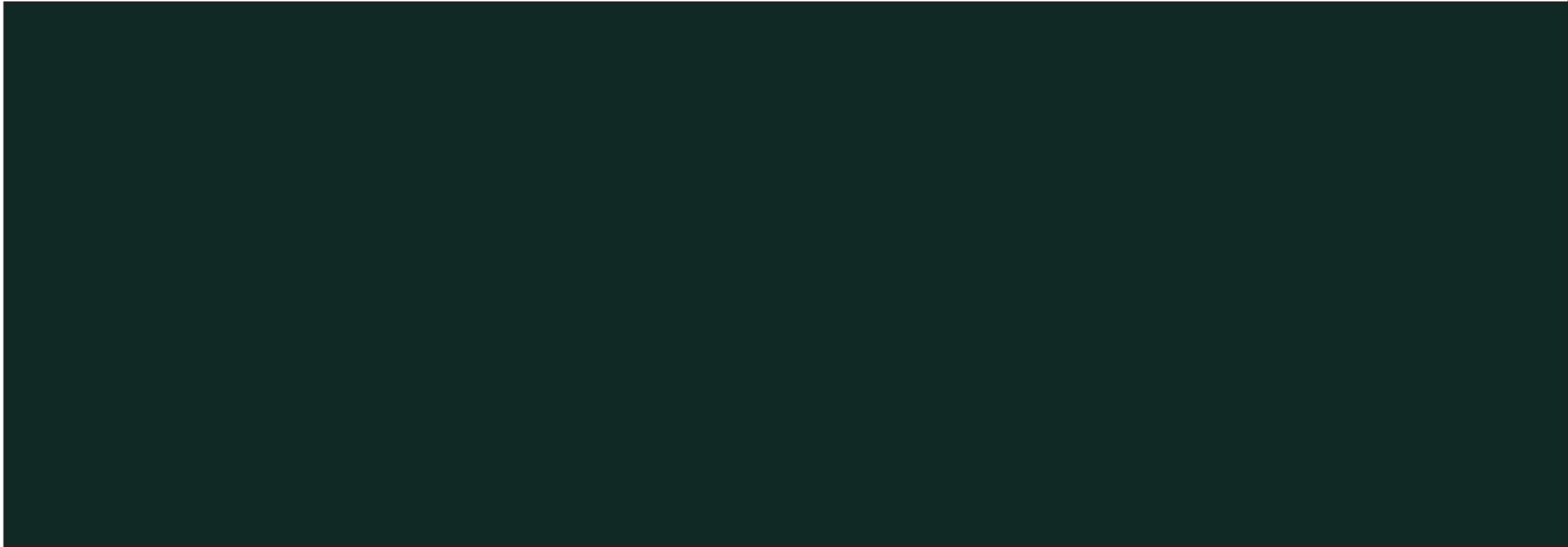
Section DD

3d Views



CONFERENCE ROOM

The Art Installation Custom made from cork wood with two types of colours, with swede wallpaper in the back



Ruia House

RESIDENTIAL DESIGN
PROJECT

THE Concept

Ruia House

The idea was to redesign the wash area and the lawn with the front facade of the house, to give it a look which is simple and later can be converted to use for party too. And give the facade a historical victorian look.



THEME

The idea was to create a historic victorian look for the facade using victorian lights and beige stone cladding on the facade. The idea was to create an amalgam of beige stone cladding in all textures smooth rough and textured and use it on the cladding. The idea behind designing the lawn was to create a lawn which can be converted to a different style for party use.



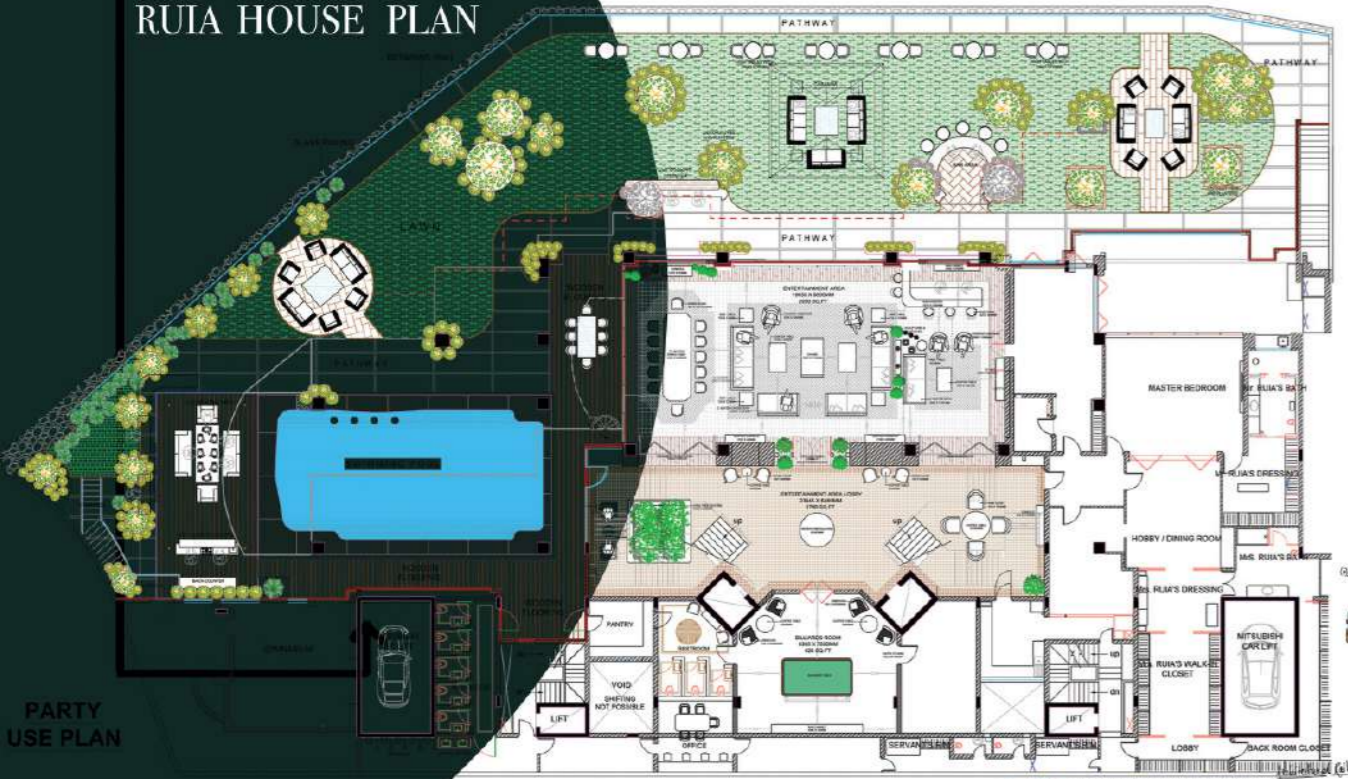
THE RUIA HOUSE

Ruia house

Exterior Lawn Design



RUIA HOUSE PLAN



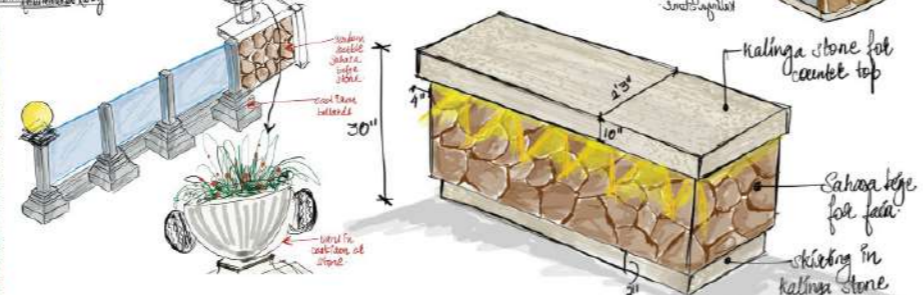
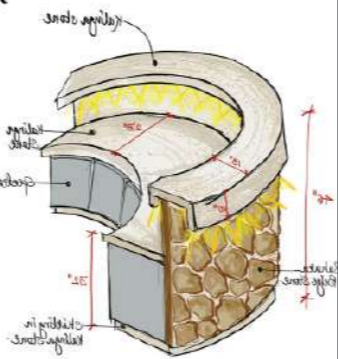
PARTY USE PLAN



MATERIAL PALLETTE

Concept

THE IDEA WAS TO REDESIGN THE WASHAREAS & THE LAWN WITH THE FRONT FACADE OF THE HOUSE, TO GIVE IT A LOOK WHICH IS SIMPLE AND LATER CAN BE CONVERTED TO USE FOR A PARTY TOO.



Facade Elevations

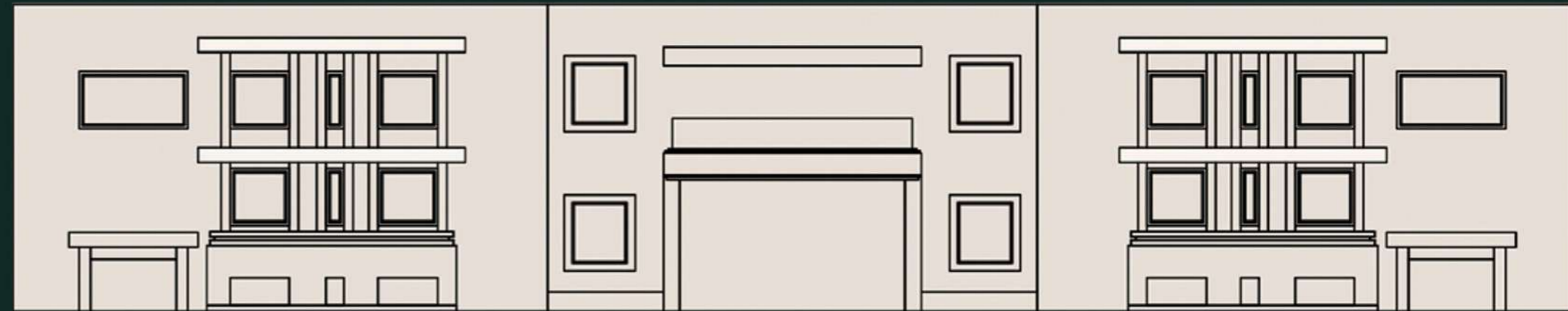


MATERIAL PALLETTE

ELEVATIONS



PAINT
STONE (SMOOTH FINISH)
STONE (ROUGH FINISH)



THE IDEA WAS TO REDESIGN THE WASHAREAS & THE LAWN WITH THE FRONT FACADE OF THE HOUSE, TO GIVE IT A LOOK WHICH IS SIMPLE AND LATER CAN BE CONVERTED TO USE FOR A PARTY TOO.



3d Views



Ruia House

The space includes complete facade design and a lawn with wash areas and open bar counters and seating areas facing sea side.





*Hospitality Design
Studio*

Hospitality Design Studio



Amenities

-  SWIMMING POOL
-  DINNING (CAFE + RESTRO)
-  ACCOMODATION
-  RECREATION AND SPA



Suite Room



Concept

THE ESSENCE OF THE BRAND LIES IN THE ARTISTICAL ORIGIN, AS IT IS A CELEBRATION OF THE AGE OLD HANDCRAFTED TRADITIONS. INSPIRED BY NATURE, MICHAEL ARAM'S BIGGEST MUSE. ARAM'S CRAFTS PIECES HAVE A PERSONAL CONNECTION TO HIM AND THEY SPEAK FOR TO HIS LOVE OF SYMBOLISM NATURE, NARRATIVE, STORYTELLING.



Cafe & Restaurant



COLOUR PALLETTE & MATERIALS



CAFE PLAN

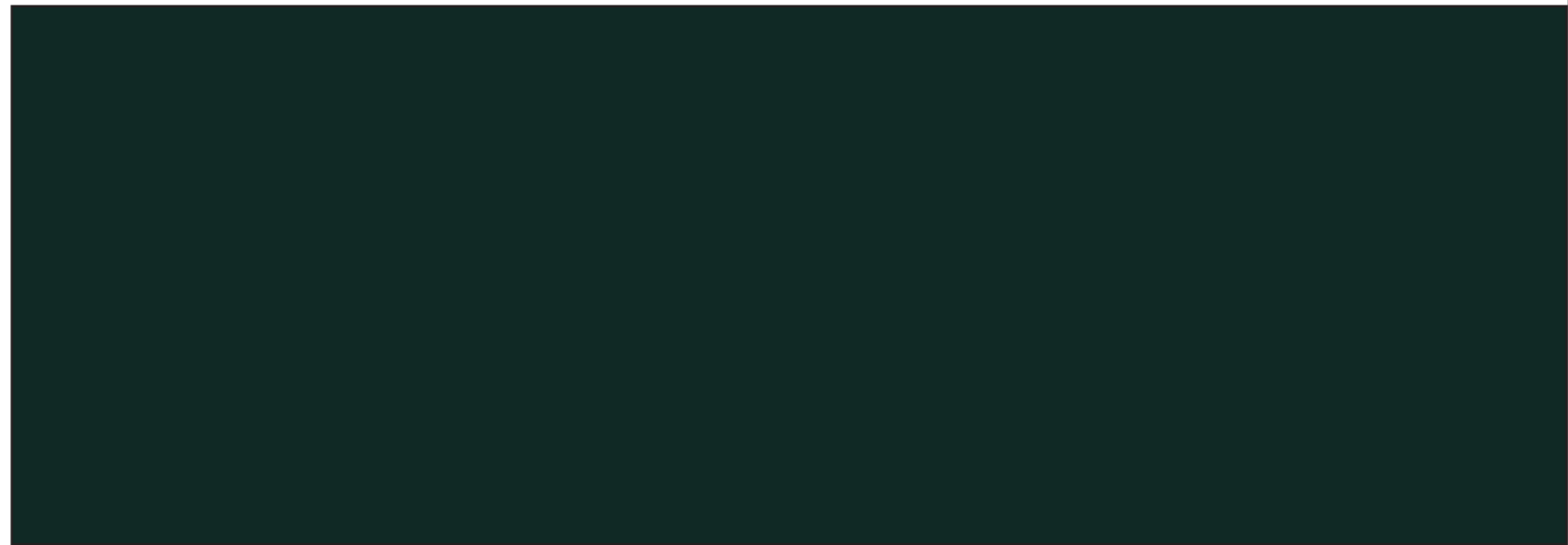


COLOUR PALLETTE & MATERIALS



SECTION





Container Kiosk
BAR CAFE

Bar Cafe

CONTAINER KIOSK
HEIGHT- 8FT 6 INCHES
SIZE- 20FT BY 8FT
LOCATION- MUMBAI

PLAN VIEW OF CONTAINER

Concept
AS IT IS NEAR AND HAS A BANDRA WORLI SIDE FACING VIEW. THE CUSTOMERS SHOULD FEEL CLOSE TO THE VIEW MY MAIN OBJECTIVE WAS TO MAKE SURE THAT PEOPLE DONT FEEL ENCLOSED IN A METAL BOX AND RATHER FEEL THE OPENESS AND PLEASING ENVIRONMENT.

MATERIAL BOARD



CONCEPTUAL SKETCHES



3D VIEWS

EXTERIOR VIEW OF CAFE

THE COMPLETE EXTERIOR OF THE CAFE IS DESIGNED TO GIVE THE PEOPLE VISITING THERE A EXPERIENCE OF OPENNESS ENJOYING THEIR RESPECTIVE DRINKS WHILE ENJOYING THE VIEW WITH THEIR FRIENDS.



INTERIOR VIEW OF DRINK PREPARATION COUNTER

THE AREA IS DESIGNED IN SUCH A WAY THAT THE BAR COUNTER COMPLIMENTS THE BACK WINDOW WITH ALSO CLEAR GLASS BESIDE IT WHICH GIVE THE COMPLETE. BANDRA WORLI SEALINK VIEW AND ALSO A GREAT EXPERIENCE WHILE BUYING THE DRINK..



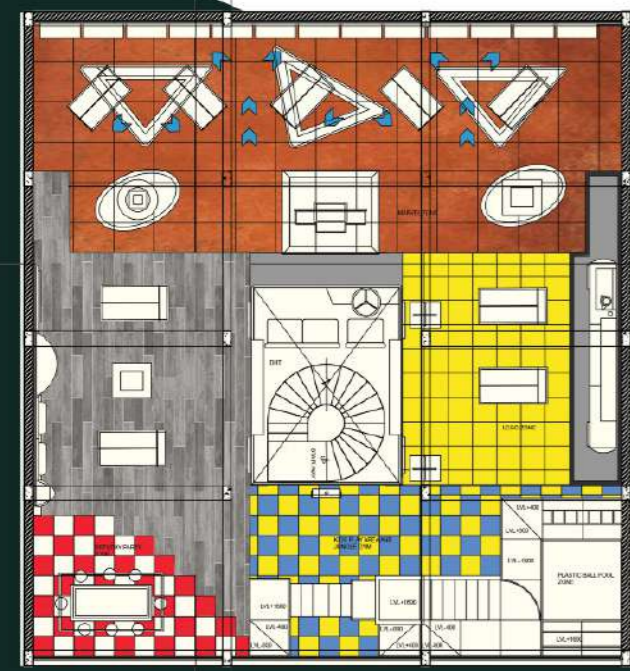


Retail Design Studio

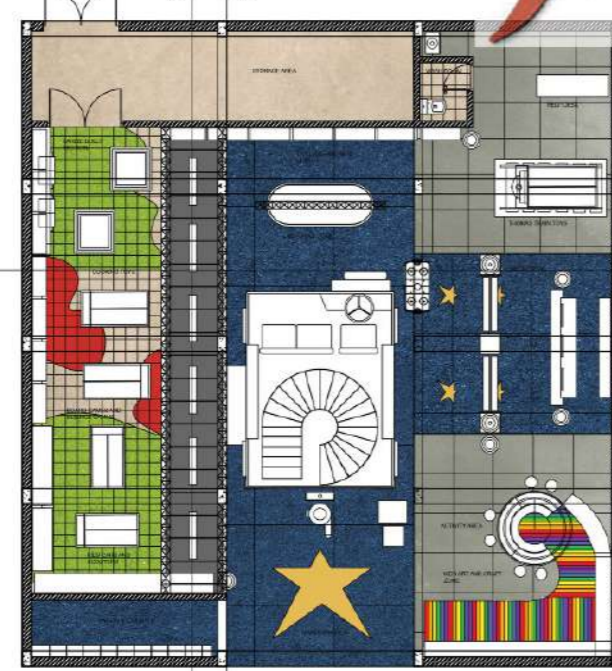
HAMLEYS TOY STORE

Retail Design

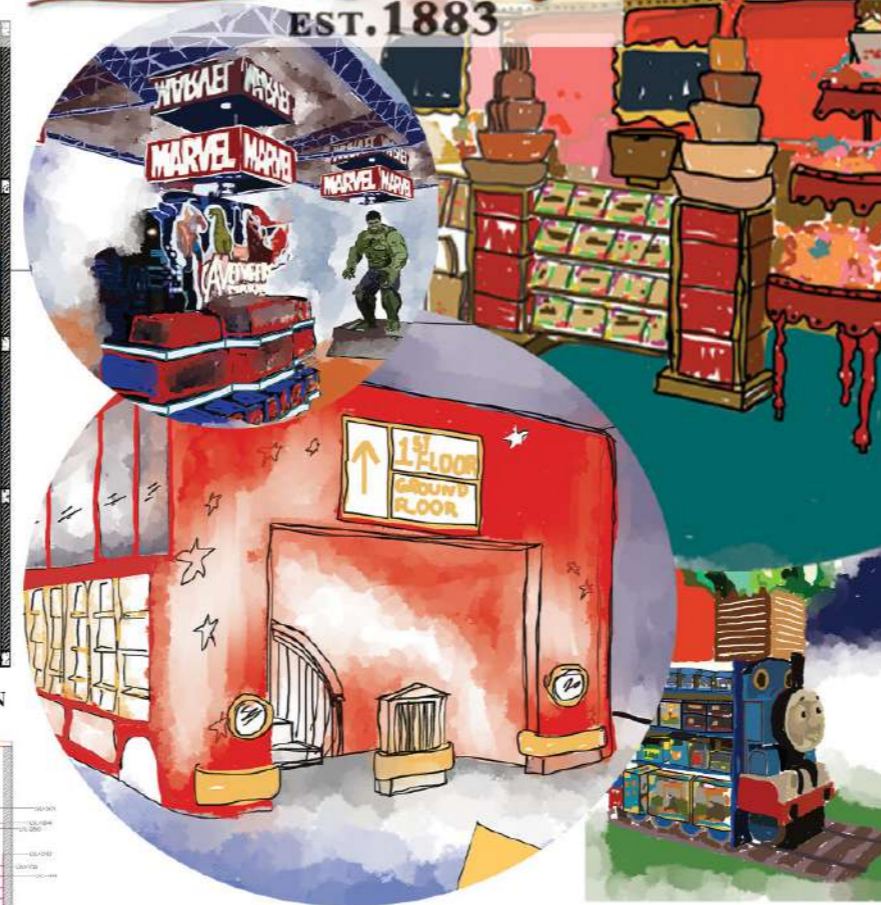
Hamleys & Co.
EST. 1883



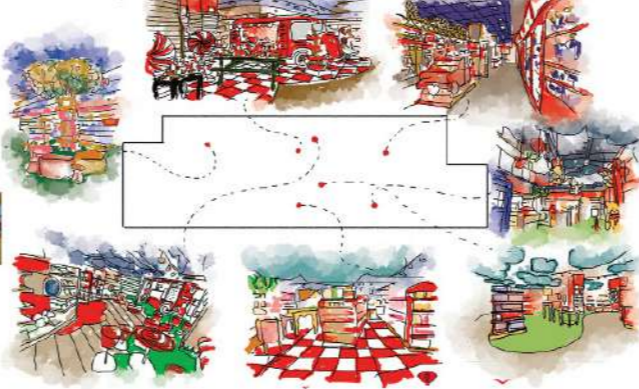
HAMLEYS STORE 1ST FLOOR PLAN



HAMLEYS STORE GROUND FLOOR PLAN



Hamleys



MARVEL TOY'S AREA

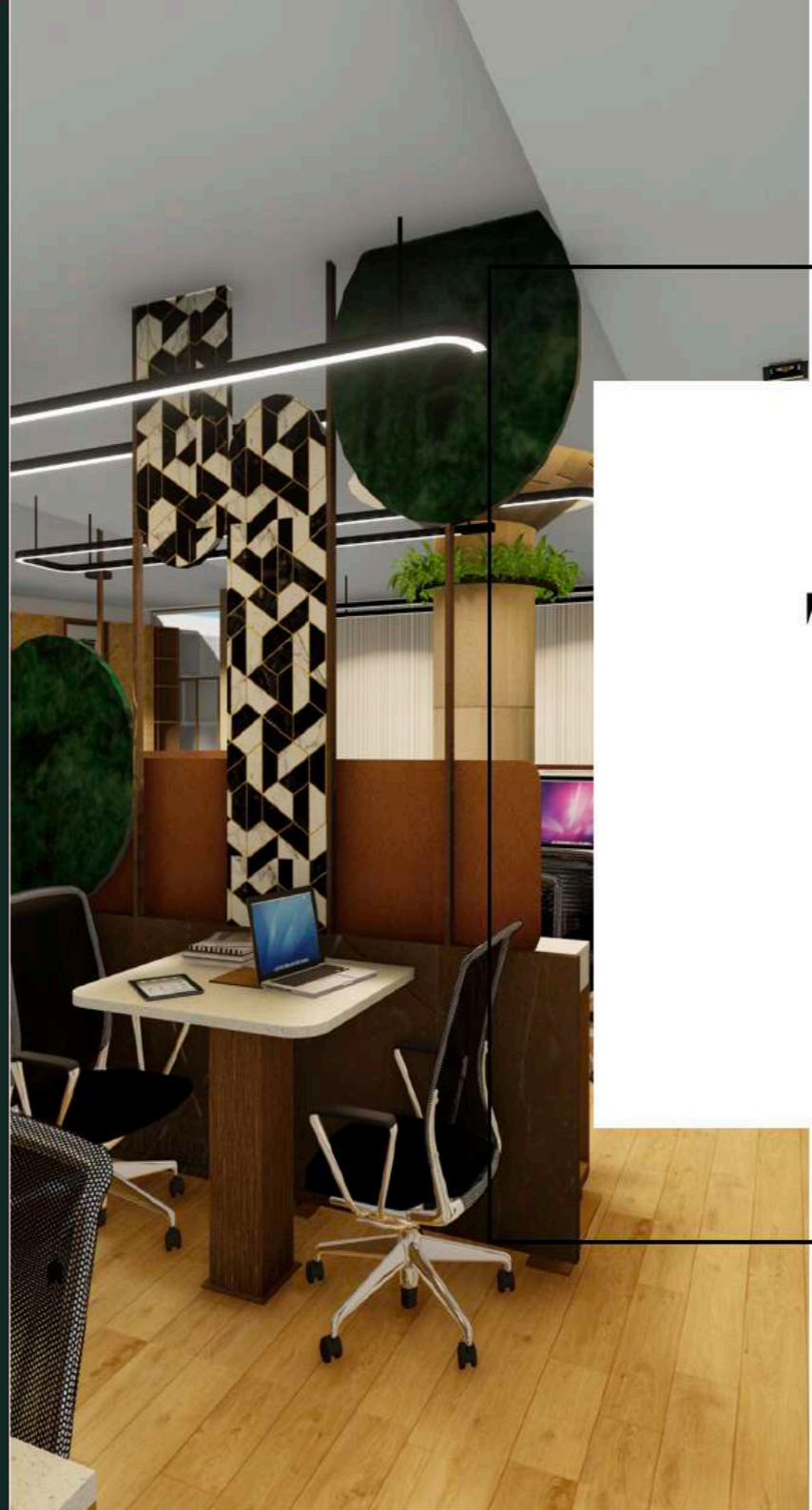
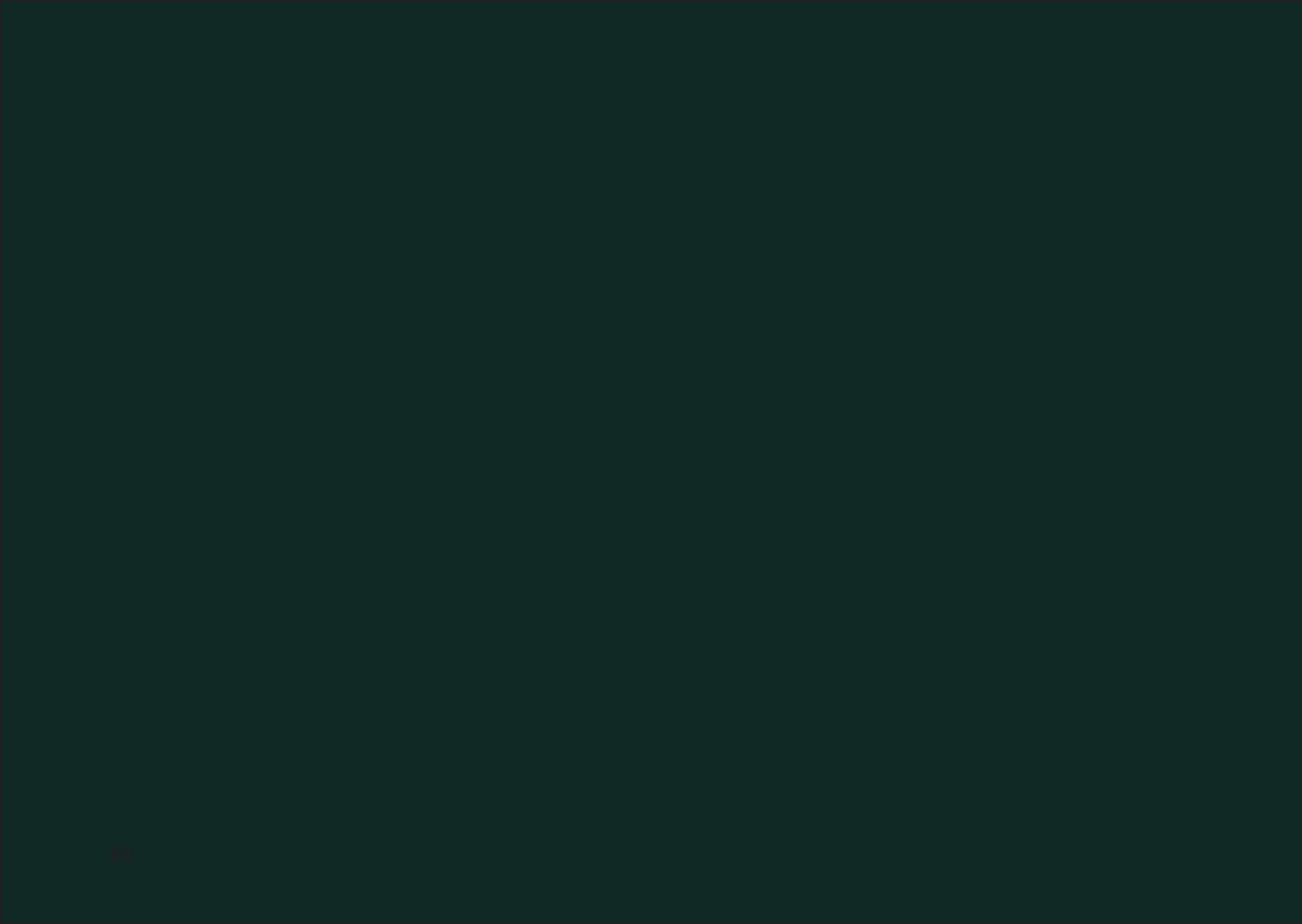
THE MARVEL TOYS SECTION IS SPECIALLY DESIGNED FOR KIDS IN SUCH A WAY THAT THEY ENJOY THE COMPLETE EXPERIENCE OF BUYING THE TOYS. THE PLACEMENT OF HUGE ACTION FIGURINE'S ALSO ADD UP TO THE EXPERIENCE OF BUYING THE TOYS.

3D VIEWS

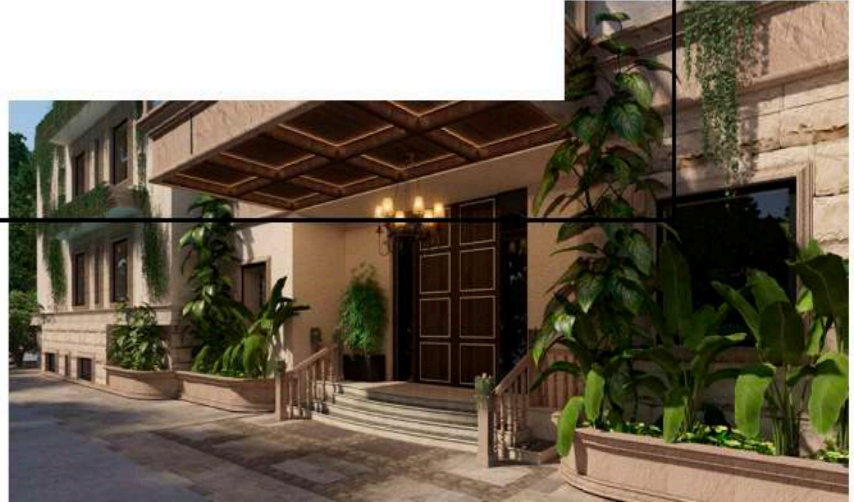
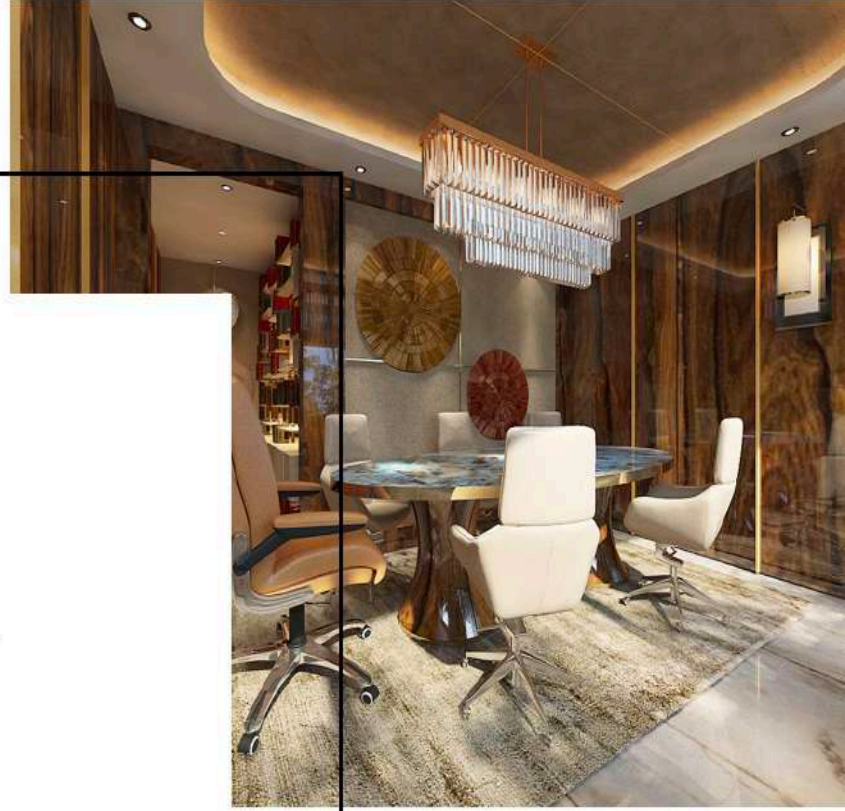
REMOTE CONTROL CAR RACE TRACK

KIDS COULD ENJOY PLAYING WITH REMOTE CONTROL CARS IN THIS RACING TRACK. BEFORE BUYING A CAR TOY THEY COULD TEST THE TOY HEAR IN THE TRACK OR JUST HAVE FUN PLAYING WITH THE OTHER TEST CARS KEPT FOR THE KIDS IN THE TRACK.





THANK
You



Thank you

**CONTACT:- aishwarya193019@gmail.com
9867989767**

